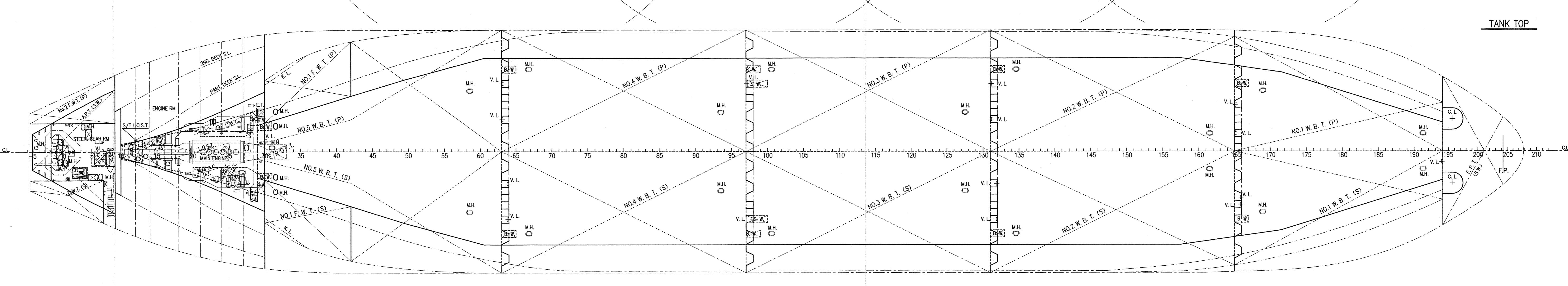
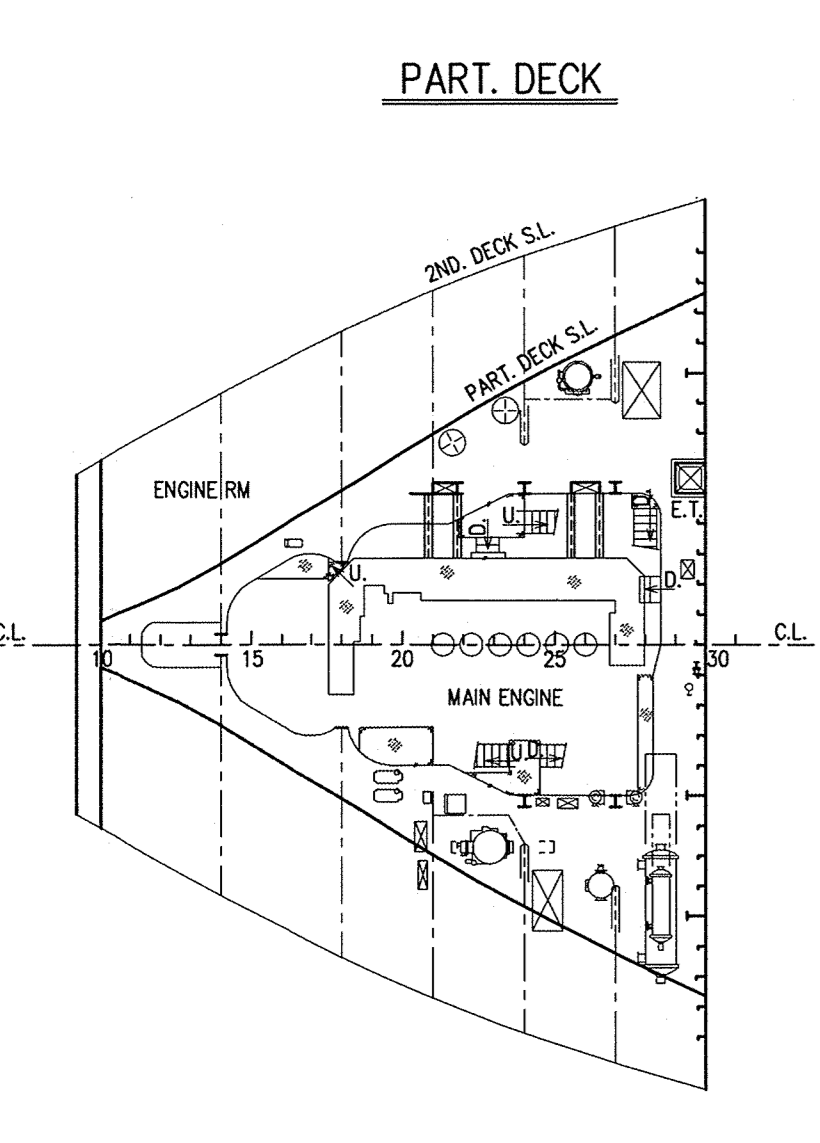
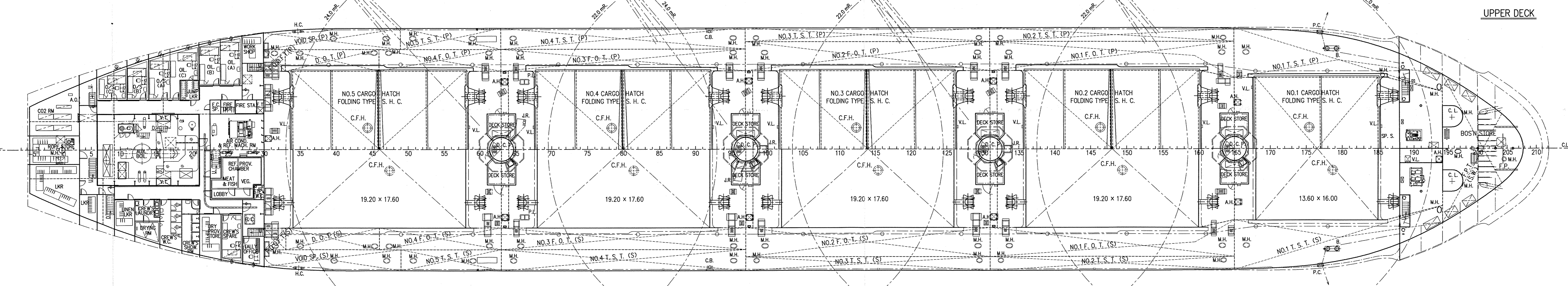
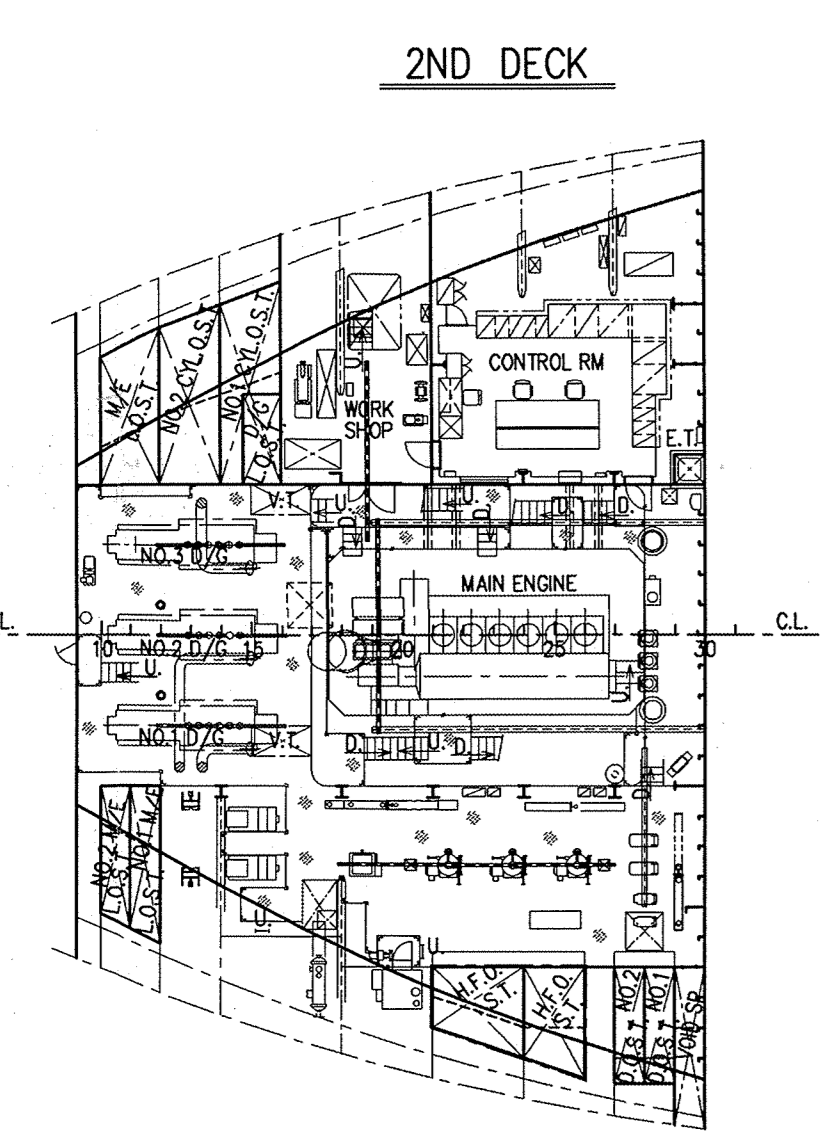
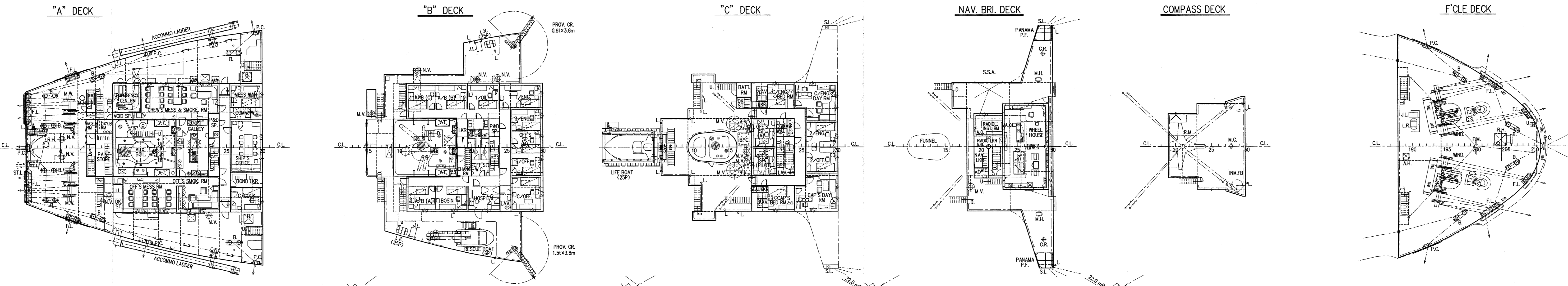
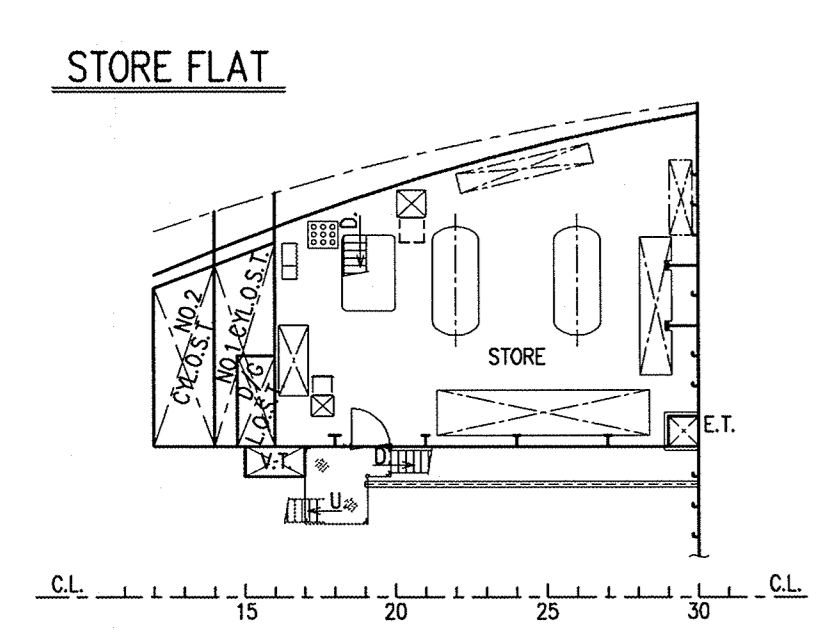
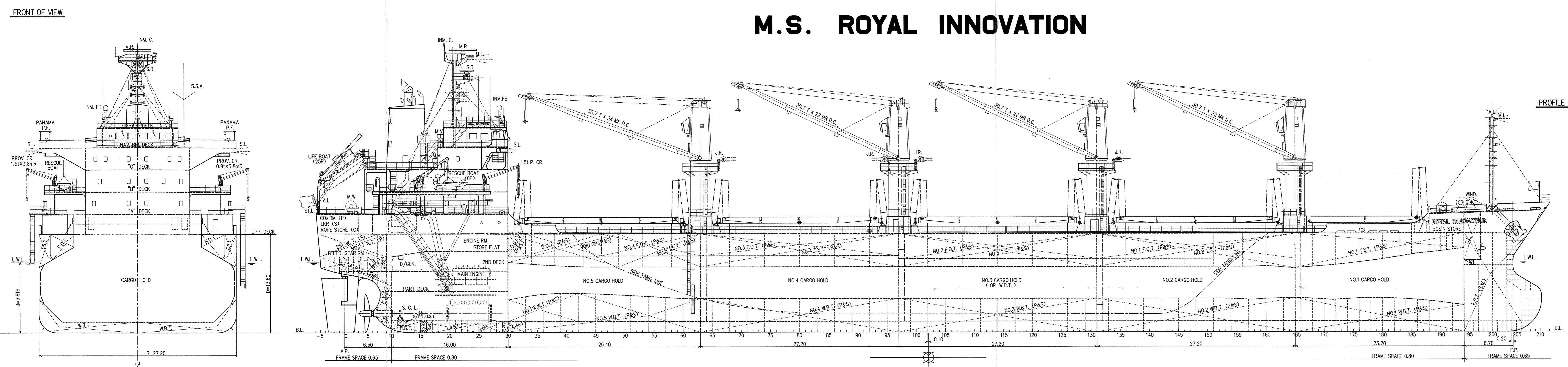


GENERAL ARRANGEMENT SCALE 1:200

M.S. ROYAL INNOVATION

HISTORY
DRAWN BY THIS WORKS.
March 4, 2011



PRINCIPAL PARTICULARS	
LENGTH (O.A.)	169.37 m
LENGTH (B.P.)	160.40 m
BREADTH (MID.)	27.20 m
DEPTH (MID.)	13.60 m
DRAUGHT (EXT.)	9.819 m
DEADWEIGHT	28,374 MT
GROSS TONNAGE (I.C.T.M.)	17,027
NET TONNAGE (I.C.T.M.)	10,108
MAIN ENGINE	B & W 6S42MC (MARK V) x 1 set
MAXIMUM OUTPUT	5,850 kw (7,853 ps) x 129 rpm
NORMAL OUTPUT	4,970 kw (6,757 ps) x 122 rpm
HOLD CAPACITY (GRAIN)	37,320.63 m ³
(BALE)	35,742.83 m ³
SPEED (d = 9.70 m M.D., 85 % MCR with 15 % S.M.)	14.0 knots
TRIAL MAX.	16.141 knots
CLASS	NIPPON KAI KYOKAI (NK)
CLASSIFICATION CHARACTERS	NK-NS-EBC-A, BC-XII, GRAB (ESP) and MNS*
INSTALLATION CHARACTERS	CHG, MPP, LSA, RCF, AFS
DESCRIPTIVE NOTE	STRENGTHENED FOR HEAVY CARGO LOADING WHERE HOLDS NOS. 2 & 4 MAY BE EMPTY

COMPLEMENT			
DECK PART	ENGINE PART	BUSINESS PART	
CAPTAIN	1	CHIEF ENGINEER	1
CHEF OFFICER	1	1ST ENGINEER	1
2ND OFFICER	1	2ND ENGINEER	1
3RD OFFICER	1	3RD ENGINEER	1
BOATSWAIN	1	NO.1 OILER	1
ABLE SEAMAN	3	OILER	3
CHIEF COOK	1	MESS MAN	1
ORD. SEAMAN	1		
TOTAL NUMBER OF OFFICER CLASS			8 P.
TOTAL NUMBER OF CREW CLASS			13 P.
OFFICER'S SPARE (JUNIOR OFFICER CLASS)			2 P.
CREW'S SPARE (RATING CREW CLASS)			1 P.
OFFICER'S SPARE (PILOT)			1 P.
GRAND TOTAL			25 P.

CAUTION
THIS DRAWING OR DOCUMENT IS THE PROPERTY OF IMABARI SHIPBUILDING CO., LTD. REPRODUCING, COPYING, UTILIZATION FOR PURPOSES OTHER THAN AGREED, DISCLOSURE TO A THIRD PARTY, ARE STRICTLY SUBJECT TO PRIOR WRITTEN AGREEMENT BY IMABARI SHIPBUILDING CO., LTD.



FINISHED PLAN		M.S. "ROYAL INNOVATION"	
CON-FERRED	IMABARI DESIGN GROUP BASIC DESIGN TEAM	IMO 9573969	GENERAL ARRANGEMENT
APPROVED	<i>S. Masuda</i>	SCALE	DWG. NO.
CHECKED	<i>S. Masuda</i>	1/200	C-0200
CHECKED	<i>H. Yoshida</i>		
DRAWN	<i>H. Hata</i>		
SHP NO.	CLASS		
S-740	NK		