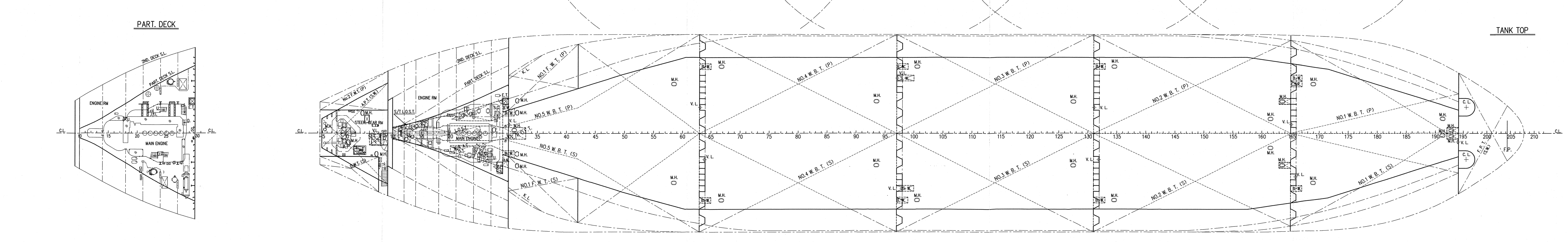
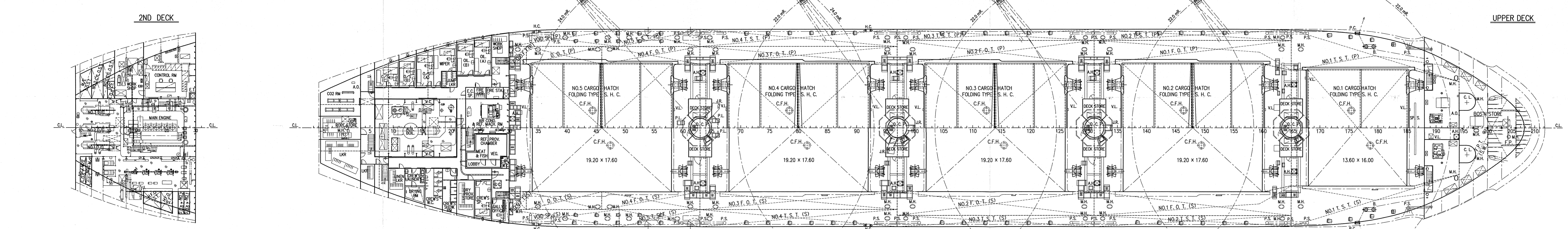
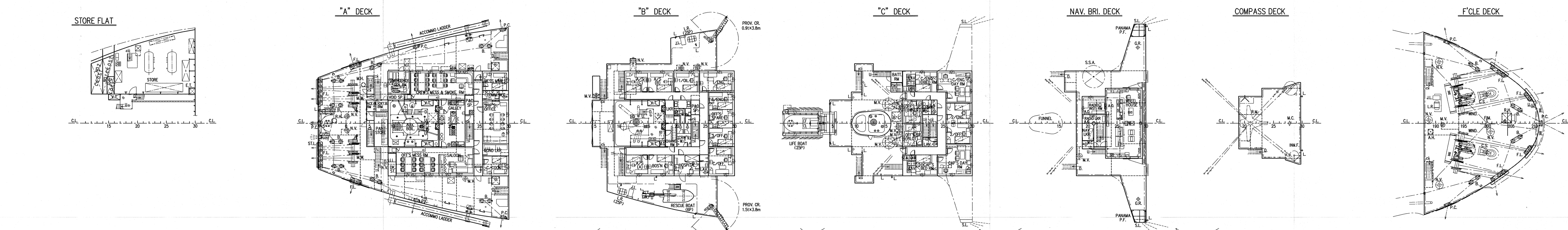
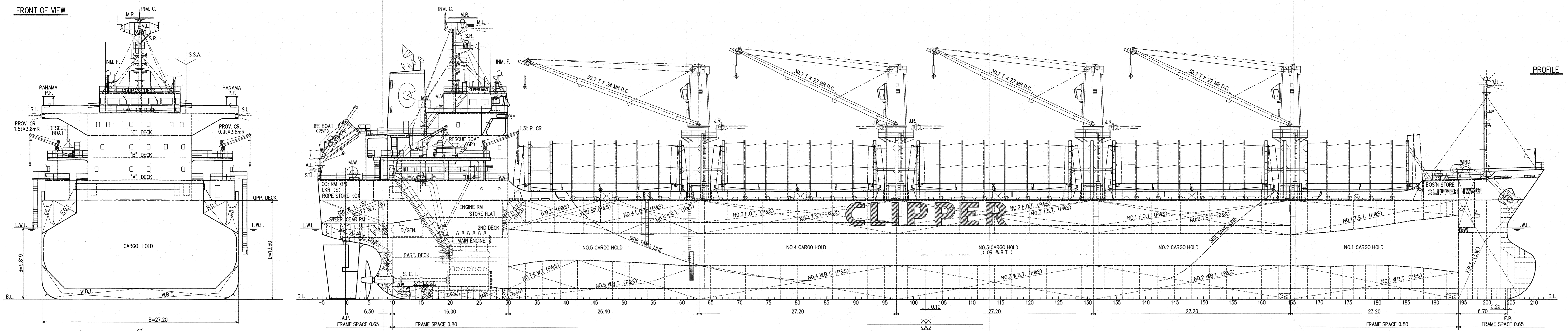


GENERAL ARRANGEMENT SCALE 1:200

M.S. CLIPPER IWAGI



PRINCIPAL PARTICULARS	
LENGTH (O.A.)	169.37 m
LENGTH (B.P.)	160.40 m
BREADTH (M.D.)	27.20 m
DEPTH (M.D.)	13.60 m
DRAUGHT (EXT.)	9.819 m
DEADWEIGHT	28,199 MT
GROSS TONNAGE (I.C.T.M.)	17,009
NET TONNAGE (I.C.T.M.)	10,158
MAIN ENGINE	
MAKITA-MITSUBISHI-MAN	B & W 6542MC (MARK VI) x 1 set
MAXIMUM OUTPUT	5,850 kw (7,953 ps) x 129 rpm
NORMAL OUTPUT	4,970 kw (6,797 ps) x 122 rpm
	(85% M.C.R.)
HOLD CAPACITY : (GRAN)	37,320.63 m ³
(BALE)	35,742.83 m ³
SPEED	
SERVICE (d = 9.70 m M.D., 85 % MCR with 15 % S.M.)	abt. 14.0 knots
TRIAL MAX.	16.197 knots
CLASS AMERICAN BUREAU OF SHIPPING (ABS)	
CLASSIFICATION CHARACTERS	
+A1 (E) BULK CARRIER, BC-A	
(Strengthened for heavy cargo loading holds nos.2&4 may be empty)	
SHR, GRAB, +AMS, +ACCU, ESP, HCS	

COMPLEMENT			
DECK PART	ENGINE PART	BUSINESS PART	
CAPTAIN	1 CHIEF ENGINEER	1	
CHIEF OFFICER	1 1ST ENGINEER	1	
2ND OFFICER	1 2ND ENGINEER	1	
3RD OFFICER	1 3RD ENGINEER	1	
BOATSWAN			
1 NO.1 OILER	1 CHIEF COOK	1	
ABLE SEAMAN	3 OILER	2	MESS MAN
ORD. SEAMAN	3 WIPER	1	
TOTAL NUMBER OF OFFICER CLASS 8 P.			
TOTAL NUMBER OF CREW CLASS 13 P.			
OFFICER'S SPARE (JUNIOR OFFICER CLASS) 1 P.			
CREW'S SPARE (RATING CREW CLASS) 1 P.			
OFFICER'S SPARE (OWNER) 1 P.			
OFFICER'S SPARE (PILOT) 1 P.			
GRAND TOTAL 25 P.			

QUEEN ALESIA

CAUTION
THIS DRAWING OR DOCUMENT IS THE PROPERTY OF IMABARI SHIPBUILDING CO., LTD.
REPRODUCING, COPYING, UTILIZATION FOR PURPOSES OTHER THAN AGREED, DISCLOSURE TO A THIRD PARTY, ARE STRICTLY SUBJECT TO PRIOR WRITTEN AGREEMENT BY IMABARI SHIPBUILDING CO., LTD.



FINISHED PLAN		M.S. "CLIPPER IWAGI"	
CON-FERRED	IMABARI DESIGN GROUP BASIC DESIGN TEAM	IMO 9573799	GENERAL ARRANGEMENT
APPROVED	T. Morita	SHIP NO.	S-H586
CHECKED	S. Fujimori	CLASS	ABS
DRAWN	X. Endo	SCALE	1/200
		OWG NO.	C-0200