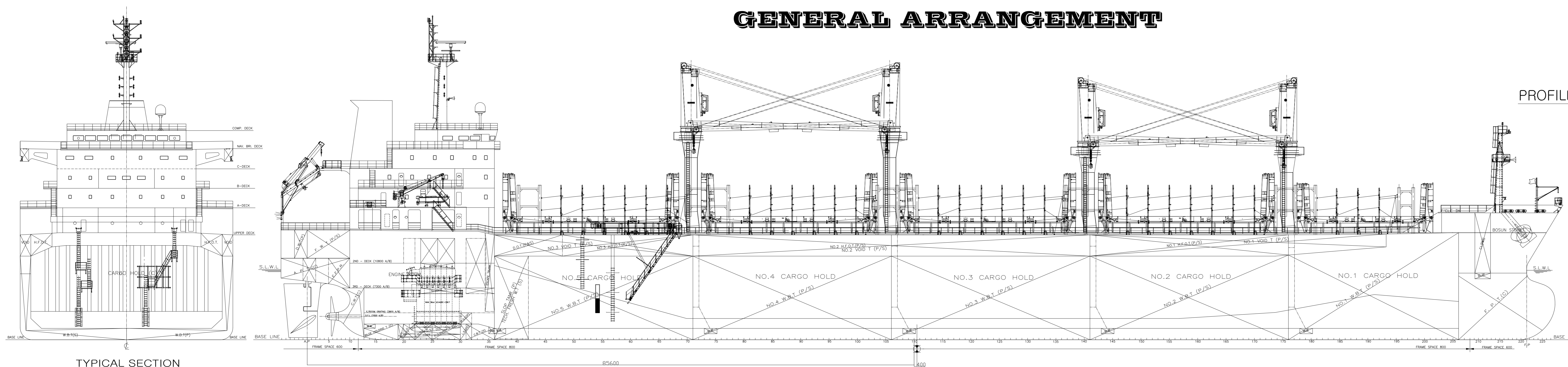


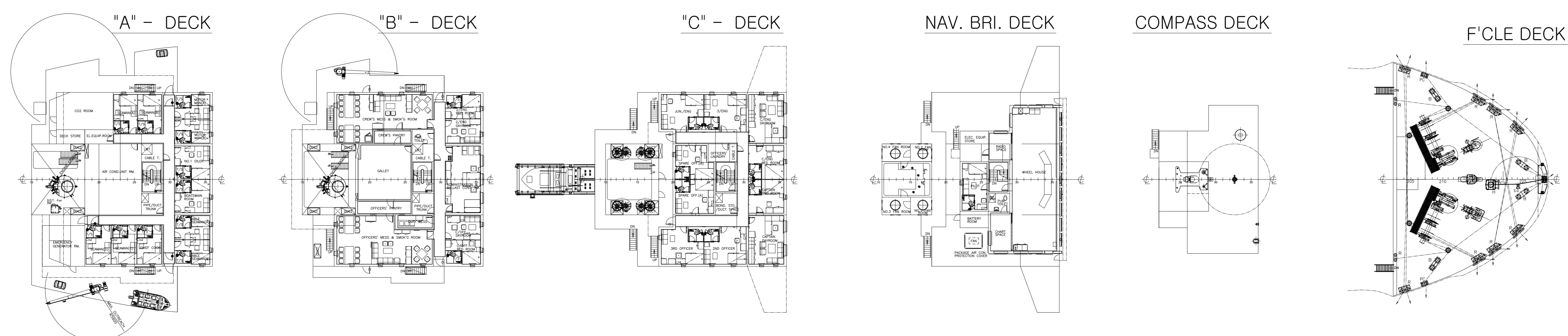
GENERAL ARRANGEMENT

PLAN HISTORY			
DATE	REV. NO.	DESCRIPTION	REMARK
2013. 05. 15	1	FINAL DRAWING FOR YS-1227	

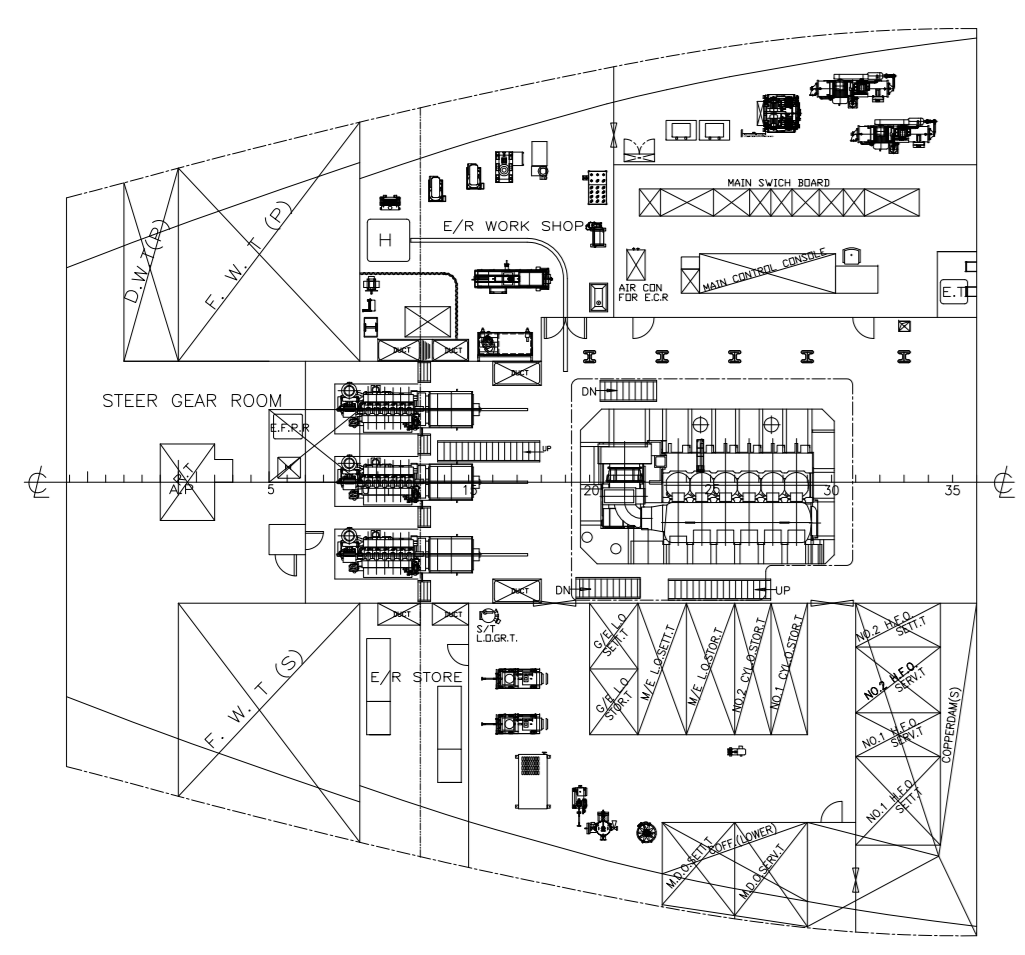


PROFILE

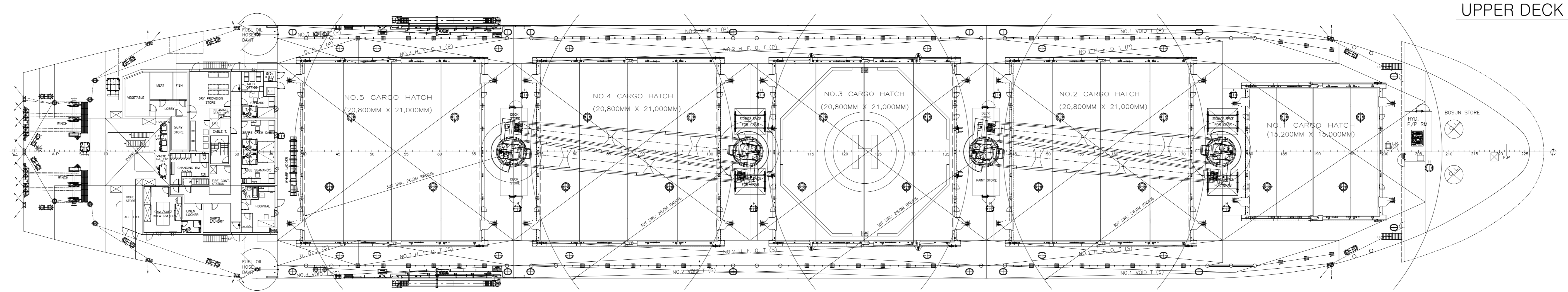
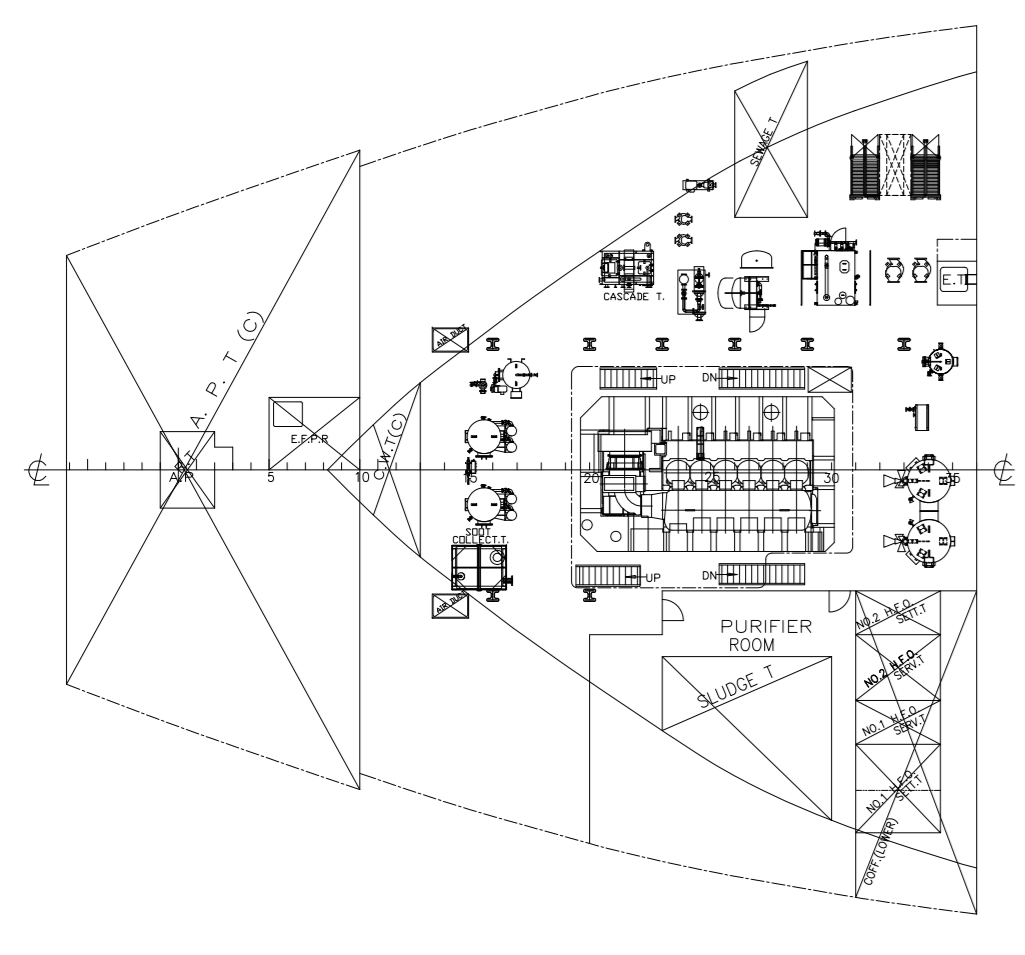
TYPICAL SECTION



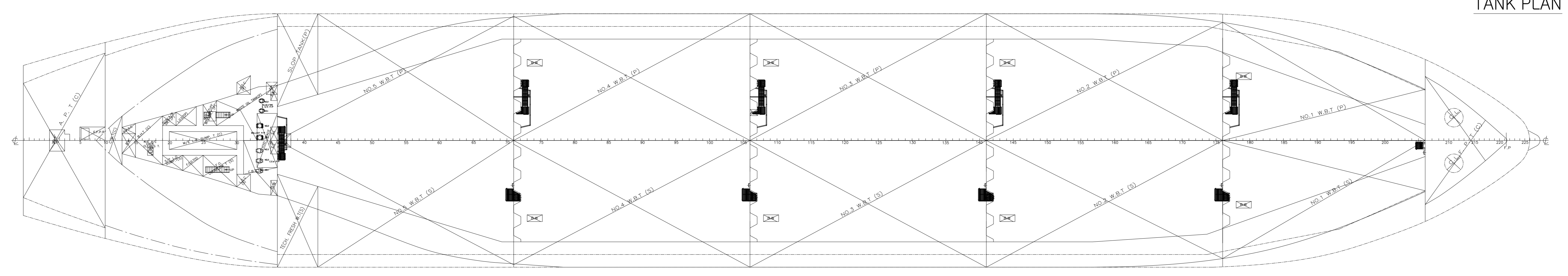
2ND - DECK



3RD - DECK



UPPER DECK



TANK PLAN

PRINCIPAL PARTICULARS

LENGTH O. A.	abt. 180.82 M
LENGTH B. P.	172.00 M
BREADTH (MLD.)	30.00 M
DEPTH (MLD.)	14.80 M
DRAFT (MLD.-D.L.W.L.)	9.50 M
DRAFT (MLD.-SCANTLING)	9.80 M
DRAFT (EXT.-SUMMER)	9.826 M
CLASSIFICATION : American Bureau of Shipping (ABS)	
*A1(E), "Bulk Carrier", ESP, BC-A (holds 2 & 4 may be empty), CSR, GRAB(25), AB-CM, UWILD, CRC, TCM, CPS, GP, PMA	
*ACCU *AMS	
MAIN ENGINE : MAN B&W 6S46MC-C, MK-7	
(MCR)	7,860 KW x 129.0 RPM
(NCR)	7,074 KW x 124.5 RPM
SPEED (NCR, 15% S/M, at DESIGN DRAFT)	14.50 KNOTS
COMPLEMENT	25P
TONNAGE	INTERNATIONAL GROSS 22,927
	NET 10,616

PROJECT NO. :	YS-1227	IMO NO. :	9571428								
OWNER	YEOSU OCEAN CO., LTD.	SHIP NAME :	ORIENT GLORY								
APP. BY	J. Y. YU	SUBJECT :	DWT 32,000 TON CLASS BULK CARRIER								
APP. BY		GENERAL ARRANGEMENT									
APP. BY											
CHK. BY											
DWN. BY	J.Y. YU	SCALE	1/250	DATE	2013. 5. 15.	CLASS	ABS	DWG. NO.	B-102-00	REV.	
BUILDER	YEOSU OCEAN CO., LTD. #4, BONGHIL-GU, Eosu-Dong, Yeosu-City, Jeollanam-Do, Korea TEL: +82-61-840-5071, FAX: +82-61-8234-9307										
DESIGNER	SAMHO HI-TECH CO., LTD.										